

From: [Wiechman, Lief](#)
To: [Kevin Doherty](#)
Subject: Fwd: Mining Maps
Date: Tuesday, January 27, 2015 2:03:12 PM
Attachments: [Draft_threats_Mining_BLM Minerals & Prospecting Permit Applications data.pdf](#)
[Draft_threats_Mining_Locatable Mining Claims.pdf](#)

----- Forwarded message -----

From: **Turner, Ed** <ed_turner@fws.gov>
Date: Fri, Jan 23, 2015 at 10:49 AM
Subject: Mining Maps
To: Lief Wiechman <lief_wiechman@fws.gov>

Here are the actual data used in the overlay analysis. Will write it all up soon.

Energy Non-renewable: BLM Mining (No update available, 10/24/14 email FQ)
Mineral Material Disposal Sites and Locatable Mining Claims (from USGS OFR 2013-1098)

BLM Minerals & Prospecting Permit Applications - Non-energy **Minerals & Prospecting Permit Applications** (from USGS OFR 2013-1098)

Energy Non-renewable: **Footprints of all of the non-coal producing mines**

Mining: Quarries, Strip Mines and Gravel Pits - extraction from the LANDFIRE EVT v1.2

Coal:

BLM's: Coal_Footprints - - These data represent an overlay analysis combination for acreage by states of Active Coal producing mining footprints. This run was created using the GRSG_2015_USFWS_StatusReview_StateBoundaries (limited to western states) and the BLM May 13, 2014 **Coal_Footprints_mer_no_plants_in_populations_dis** data.

BLM's: Coal_Leases_Surface - - These data represent the consolidated submissions for surface coal lease data from BLM states responding to the WO 300 data call during the time period of November 2011 through May 2012 and updated with new data submitted for MT, ND, and SD on January 2nd 2013. From BLM data set, **ilmocgrsg.ILMOCDBO.Coal_Leases_Surface_MT_Update_01022013**.

--


Edwin Turner, Geographer
GIS Mapping and Analysis Branch
USFWS Carlsbad Fish and Wildlife Office
2177 Salk Ave. Suite 250
Carlsbad, CA 92008
760.431.9440 x266

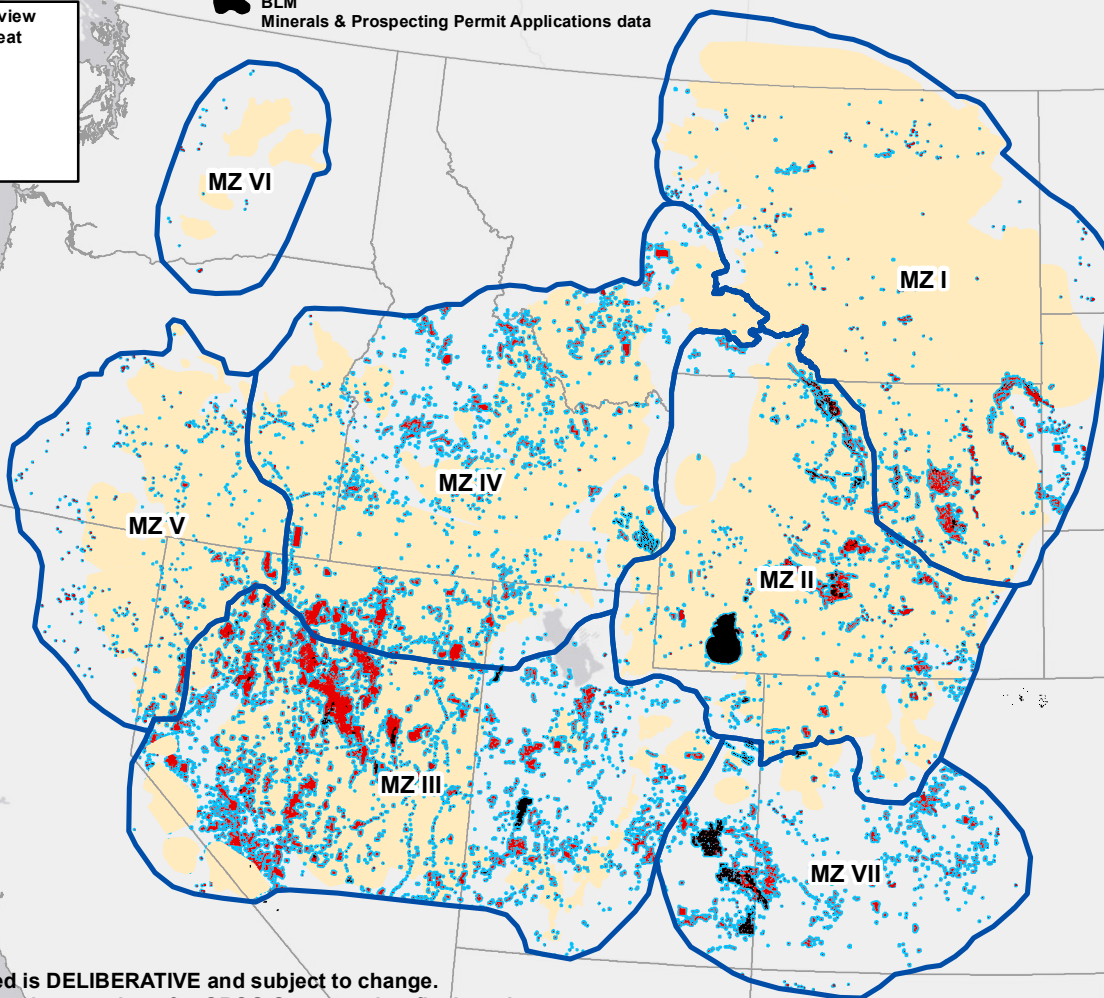
Ed_Turner@fws.gov

760.431.9440 x266

**GRSG 2105 Status Review
Mineral Mining Threat**

-  Management Zones
-  Populations
- Mineral Mining**
-  Direct Impact
-  Indirect Impact

 BLM
Minerals & Prospecting Permit Applications data



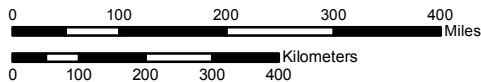
Information displayed is **DELIBERATIVE** and subject to change.
DRAFT: Map for general use and not for GRSG Status review final products

Created By: USFWS R8 Reno/Carlsbad

Map Date: 01/22/2015

Source: USFWS, BLM (Mining buffered 2.5km per USGS OFR 2013-1098, pg. 77)

Base Map: Esri, HERE, DeLorme, MapmyIndia, © OpenStreetMap contributors, and the GIS user community



The USFWS makes no warranty for use of this map. Original data were compiled from various sources. Spatial information may not meet National Map Accuracy Standards. This information may be updated without notification.

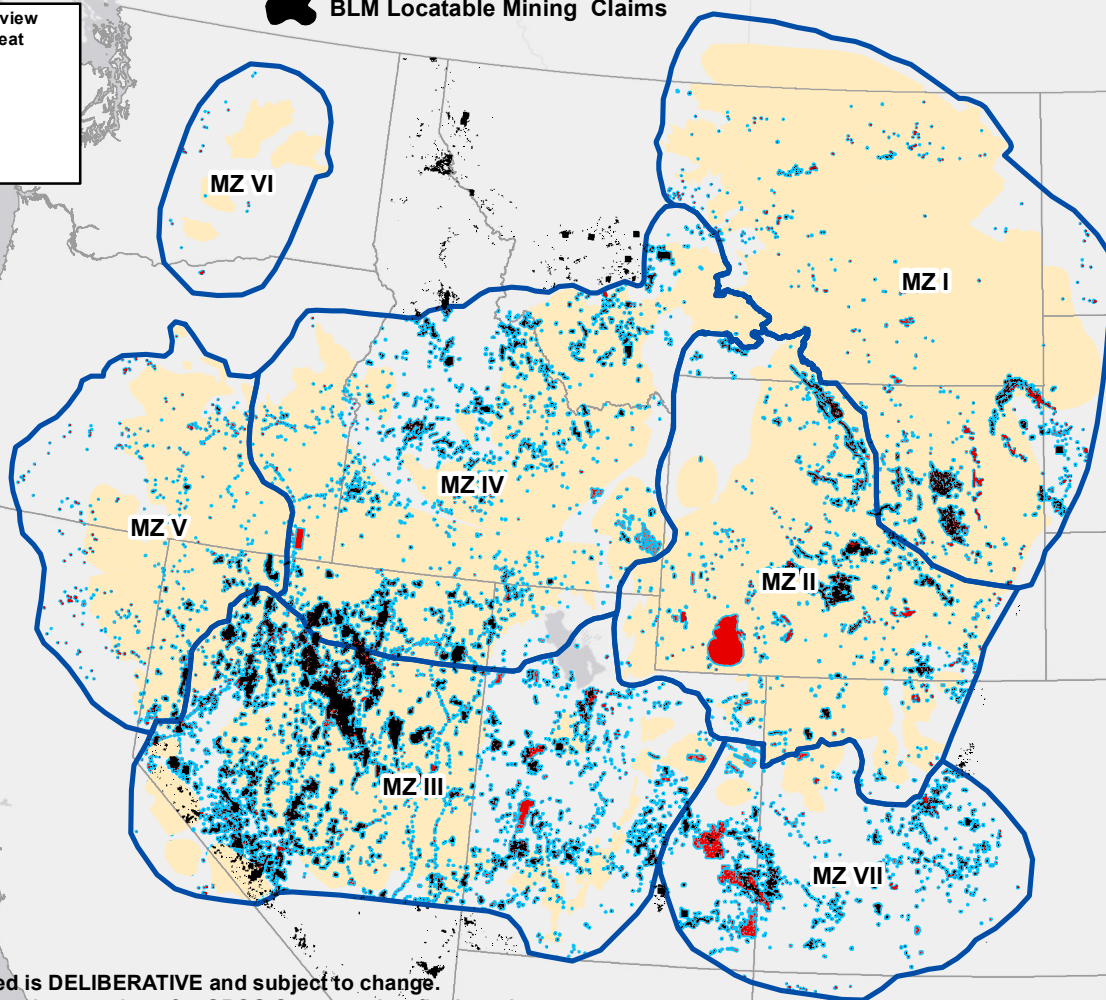


Datum: NAD 83

GRSG 2105 Status Review
Mineral Mining Threat

- Management Zones
- Populations
- Mineral Mining
 - Direct Impact
 - Indirect Impact

BLM Locatable Mining Claims



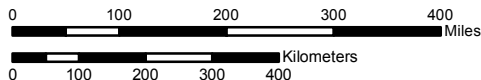
Information displayed is **DELIBERATIVE** and subject to change.
DRAFT: Map for general use and not for GRSG Status review final products

Created By: USFWS R8 Reno/Carlsbad

Map Date: 01/22/2015

Source: USFWS, BLM (Mining buffered 2.5km per USGS OFR 2013-1098, pg. 77)

Base Map: Esri, HERE, DeLorme, MapmyIndia, © OpenStreetMap contributors, and the GIS user community



The USFWS makes no warranty for use of this map. Original data were compiled from various sources. Spatial information may not meet National Map Accuracy Standards. This information may be updated without notification.



Datum: NAD 83